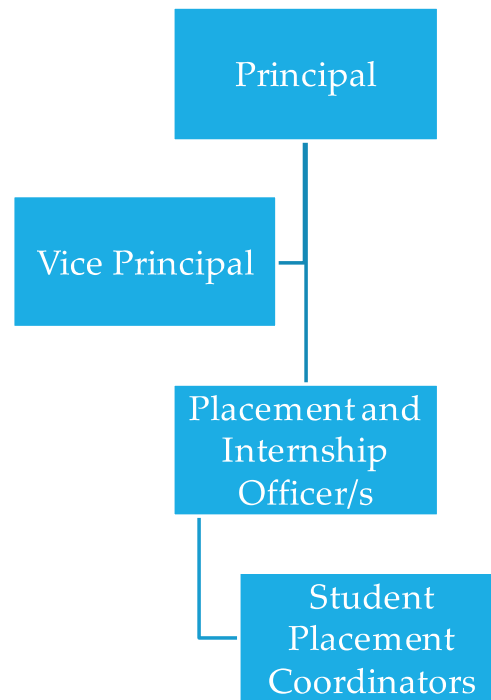




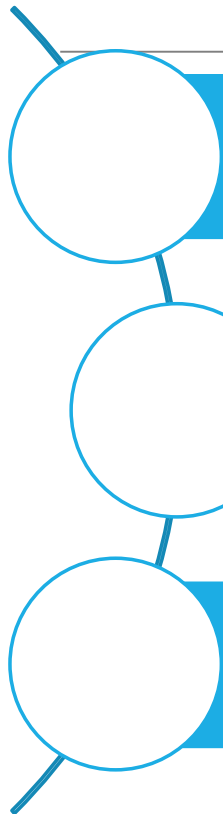
St. Joseph's College of Commerce

Placement Cell – Profile and process

PLACEMENT FUNCTIONAL STRUCTURE



Placement Types

- 
- Final placement
 - Internship
 - Part Time opportunities
-

Job Opportunities

Banking

Finance

Retail

Social

Taxation

Advisory

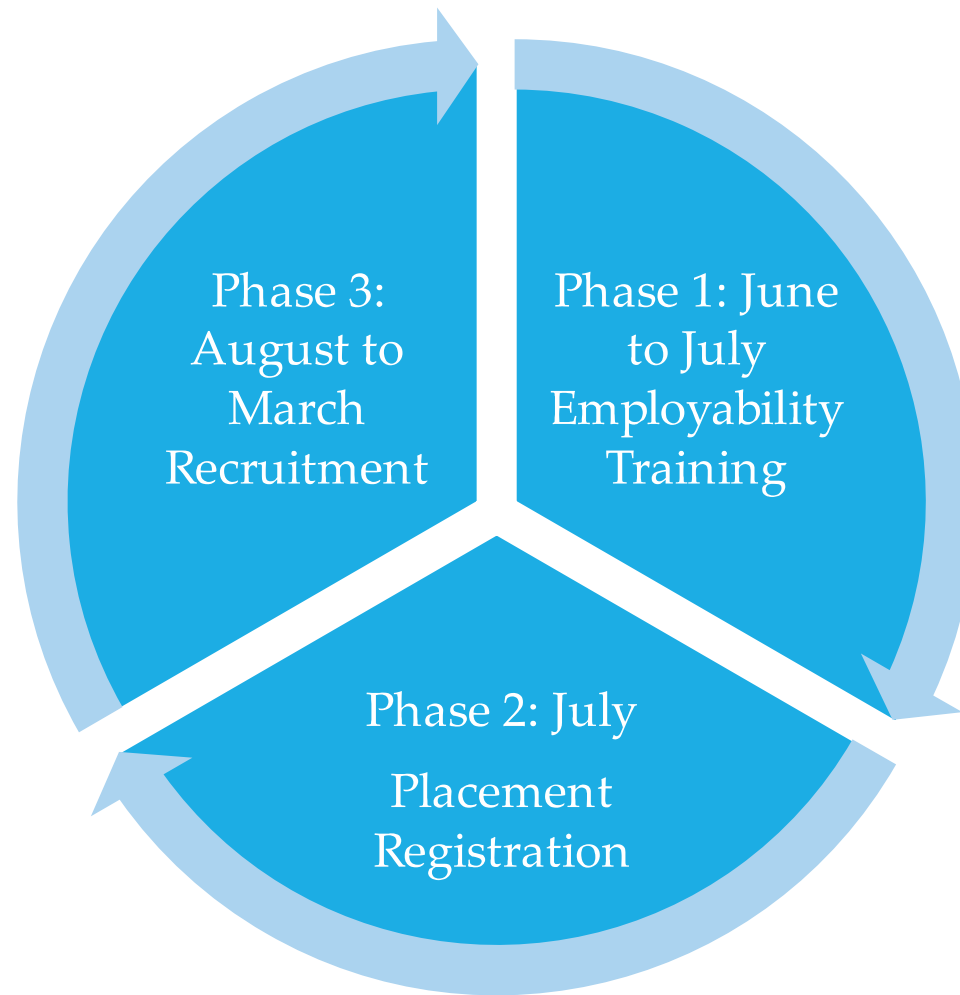
Sales

Marketing


Audit &
Assurance

Human
Resources

Phases



Phase 1- Employability Training:

- Two week placement workshop is organized focusing on aptitude and soft skills.
 - Career Mapping Session is organized mainly for the I year and II year students.
 - Guest Talk on varied topics as per the current trend.
- 
- A solid blue horizontal bar spanning the width of the slide, located at the bottom.

Phase 2-Placement Registration

Students interested in placement, go through the placement policy and sign the placement code of conduct.

Phase 3- Recruitment process

STEP 1: Email from company with required information- placement process of the company, JD, pay package and percentage cut off

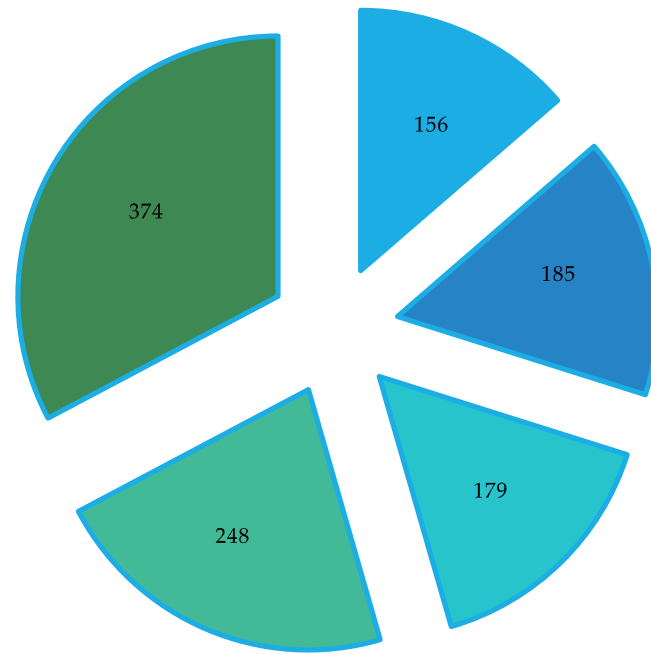
STEP 2: Finalizing the date of visit and check-list of the infrastructural, IT requirements by the company

STEP 3: Disseminate information to students and registration

STEP 4: Final placement procedure and selection

STEP 5: Follow up on letter of intent, student joining formalities, offer letters and employer feedback.

Number of Students Placed 2014-15 to 2018-19

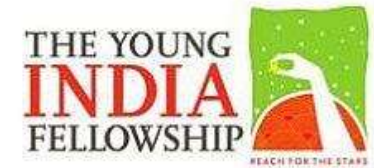


■ 2014-15 ■ 2015-16 ■ 2016-17 ■ 2017-18 ■ 2018-19

Placements



Placements



The
Gandhi
Foundation



Grant Thornton



Internship

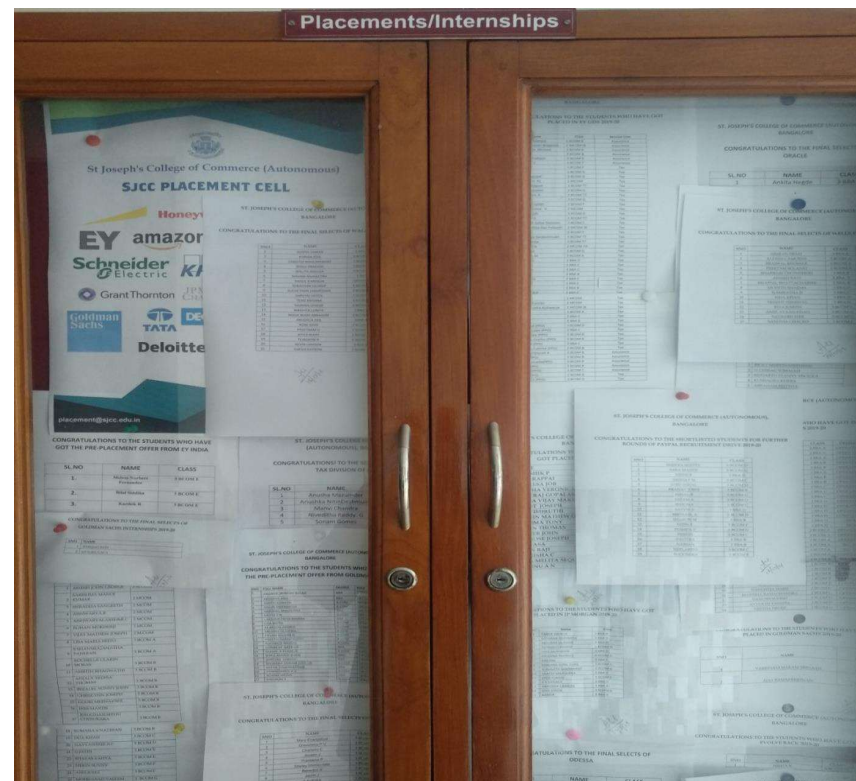


Articleship



Recognition by College to Students Placed

a. Display of Names of students placed on the Placement Notice board of College



Recognition by College to Students Placed

b. Orientation of students placed and Offer Letter Day

